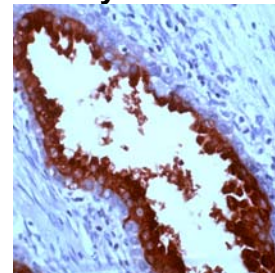




## Rabbit Anti-Human Prostate Specific Antigen (PSA) Polyclonal Antibody

<b>CATALOG #:</b>	<b>E2960</b> 0.1 ml immunogen affinity purified immunoglobulin from rabbit serum in 10mM PBS, pH 7.4 with BSA and sodium azide.
	<b>E2964</b> 1 ml immunogen affinity purified immunoglobulin from rabbit serum in 10mM PBS, pH 7.4 with BSA and sodium azide.
	<b>E2961</b> 7 ml prediluted antibody in a 50mM Tris/1% BSA buffer pH 7.6 with 0.1% sodium azide.



*Human prostate stained with anti-PSA antibody*

**INTENDED USE:** For Research Use Only. Not for use in diagnostic procedures.

**CLONE:** N/A

**IMMUNOGEN:** Purified human PSA.

**IG ISOTYPE:** Rabbit IgG

**EPITOPE:** Not determined

**MOLECULAR WEIGHT** 33-34kDa

**SPECIES REACTIVITY:** Human (tested). Others not tested.

**DESCRIPTION:** PSA is a chymotrypsin-like serine protease (kallikrein family) exclusively produced by the prostate epithelium, and abundant in seminal fluid. PSA can be detected in the sera of patients with prostatic carcinoma. It is predominantly complexed to a liver-derived serine protease inhibitor, alpha-1-antichymotrypsin (ACT). A higher proportion of serum PSA is complexed to ACT in prostate cancer than in benign prostate hyperplasia.

**APPLICATIONS:** Immunohistochemistry (IHC)  
Other applications recommended but not tested: Western Blotting

**IHC PROCEDURE:** **Specimen Preparation:** Formalin-fixed, paraffin-embedded tissues are suitable for use with this primary antibody.

**Deparaffinization:** Deparaffinize slides using xylene or xylene alternative and graded alcohols.

**Antibody Dilution:** If using the concentrate format of this product, dilute the antibody 1:200. The dilutions are estimates; actual results may differ because of variability in methods and protocols.

**Antigen Retrieval:** No special pretreatment necessary.

**Primary Antibody Incubation:** Incubate for 10 minutes at RT.

**Slide Washing:** Slides must be washed in between steps. Rinse slides with PBS/0.05% Tween.

**Visualization:** Detect the antibody as instructed by the instructions provided with the visualization system.

**POSITIVE CONTROL:** Normal prostate or prostate carcinoma

**CELLULAR LOCALIZATION:** Cytoplasmic

**STORAGE & STABILITY** Store at 2-8°C. Do not freeze. The user must validate any other storage conditions. Every antibody is expiration dated. When properly stored, the reagent is stable to the date indicated on the label. Do not use the reagent beyond the expiration date.

There are no definitive signs to indicate instability of this product; therefore, positive and negative controls should be tested simultaneously with unknown specimens.

**WARNINGS & PRECAUTIONS:**

1. Avoid contact of reagents with eyes and mucous membranes. If reagents come into contact with sensitive areas, wash with copious amounts of water.
2. This product is harmful if swallowed.
3. This product contains sodium azide, a chemical highly toxic in pure form. At product concentrations, though not classified as hazardous, sodium azide may react with lead and copper plumbing. Upon disposal, flush with large volumes of water to prevent metal azide buildup in plumbing.
4. Consult local or state authorities with regard to recommended method of disposal. In the European Union, this material and its container must be disposed of as hazardous waste.
5. Avoid microbial contamination of reagents.